

DESIGN | FABRICATE | INTEGRATE

*Offering tailored solutions
for a number of
different industries*

Agricultural
Construction
Food Processing
Heavy Equipment

Material Handling
Power Generation
Transportation
Working Material



Services:

MANAGED SERVICES:

After Hours Emergency
Repair Services
In-House Engineering
2D + 3D Detailing
Concept Modeling
Shipping & Logistics

CUTTING/FORMING:

Sheet Metal & Plate Bending
Metal Laser Cutting
Waterjet Cutting
Pipe Bending

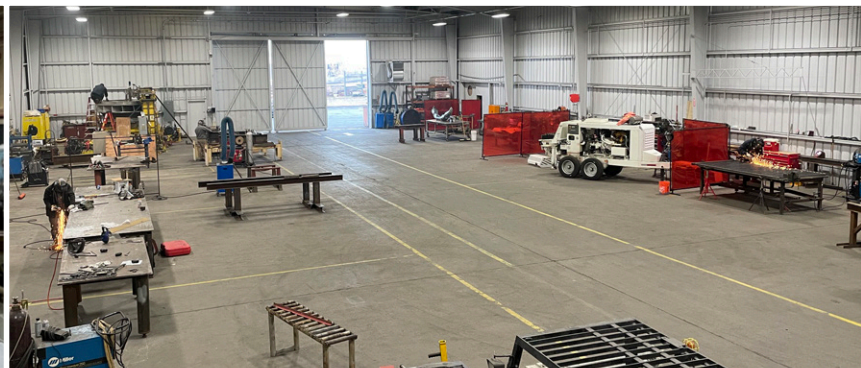
MACHINING:

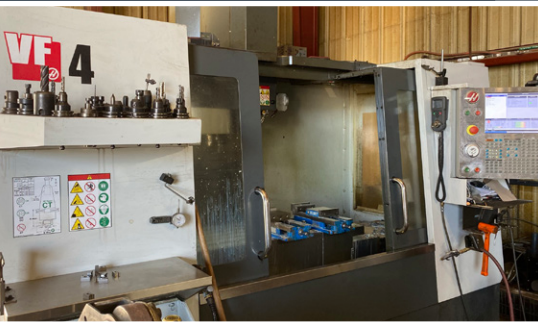
Threading
Milling
Boring
Drilling
Tapping
Turning

WELDING:

Shielded Metal Arc (SMAW)
Gas Metal Arc (GMAW/MIG)
Flux Cored Arc (FCAW)
Gas Tungsten Arc (GTAW/TIG)

Our strategically planned work cells allow us
to not only fabricate your specialty items,
but also mass produce your custom parts.





DMF has two facilities totaling approximately 30,000 square feet. We are fully equipped to handle all of your machining & fabrication needs.

EQUIPMENT LIST:

MACHINING

- HASS VF-4 CNC Vertical Mill
- HASS TM-1 CNC Tool Room Mill
- Vectrax GS20V 3 Axis CNC Mill
- Kent KTM-5VK Horizontal Mill
- Kearney & Trecker Milwaukee Model K Horizontal Mill
- Cincinnati Milacron No. 2MH Horizontal Mill
- European Lion C400TM Gap Bed Engine Lathe
- European Lion 20-MS-4 Gap Bed Engine Lathe
- Morando PA-24 Engine Lathe
- Axelson Model 16 Heavy Duty Lathe
- Fabryka Automatow Tokarskich TUR560 Engine Lathe
- Bett's 14' Heavy Duty Vertical Boring and Turning Mill
(Coming Soon - Summer 2022)

CUTTING

- Flow Mach 500 5-Axis Waterjet
- Dynatorch CNC Plasma Cutter
- Spartan Saw Horizontal Cut-off Band Saw
- Scotchman Universal Pipe Notcher
- Accurshear 1/2" x 10'
- Marvel Mark III Series #8 18" Power Tilt

WELDING

- Welding Machines up to 400 Amps

FORMING

- Accurpress 250 Ton 12' Press Break
- MG Doublepinch Hydraulic 1/2" x 10' 4-Roll Plate Bending Machine

